



GRAND ISLE CERT



After Action Report –*Flag Ceremony* - Sept 11, 2010

I was contacted by Chris Herrick, So Hero Volunteer Fire Department Chief, on September 8th to see if Grand Isle CERT could handle traffic control and parking for the flag ceremony. The flag erected by Grand Isle residents after the 9/11 attack on the World Trade Center was being relocated to the parking area turnoff on the Sandbar causeway. There was to be a parade, flag lowering and flag raising; and traffic on Route 2 over the causeway had to be shifted to provide a parade route. I spoke with Mike Guernsey of the VFW and Ray Allen of the Sheriff's Department to determine what requirements were in the permit. Two-way traffic had to be maintained. I went to the site and measured the length as 0.9 miles. With two rows of cones required to maintain two-way traffic and end tapers, I estimated we needed 90 cones to lay out the road. I borrowed 25 from SHVFD and 45 from the Sheriff's Department, which when coupled with CERT's 20 cones gave us enough cones. Those responding to the activation were Susanna Jaeger, Carl Sourdiff, Marty Kolydk, Becca Bowser, Dick Trudell, and Kay Trudell.

We arrived on site at 7:00 am and notified the Duty Officer at VEM. The team reviewed the UCTCD regarding tapers and cone spacing prior to setting out traffic cones. The first thing we did was to set out "Be Prepared to Stop" signs at both ends of the causeway to warn motorists that something was happening ahead. A 12 foot lane was established for the parade along the southern shoulder of the road and a 12 ft lane for southbound traffic set up adjacent to it. This left 10 feet and the north shoulder for northbound traffic. We had to request some fisherman parked on the north side to relocate their cars to the parking area to provide for the northbound lane. Tapers to direct the traffic on both ends were set out. The permit provided for closing the road from 8:00 to 11:00 am, so we initially placed the 2 cones along the shoulder at 100 ft intervals and then moved them into position just before 8:00. This took longer than anticipated and we finished up a little after 8:00. Fortunately, the parade was a little behind schedule, so there was no delay. When the parade started we stopped southbound traffic to allow the fire trucks to get into position and the parade proceeded down the south side of the causeway. CERT was asked to march in the parade along with the first responders, and those without specific duties during the parade did so.

At the location of the original flag pole, the flag was lowered. The crowd (which was larger than anticipated) moved into the southbound lane to gather around the flagpole. We joined with the Sherriff's Department to control traffic to one lane at a time during the flag lowering ceremony. After the lowering we were able to return to two-way traffic as

the parade continued to the turnoff on the causeway. At the causeway there was sufficient width to handle the crowd and keep two-way traffic moving.

At the conclusion of the ceremony, the crowd slowly dispersed. When all emergency vehicles had left the site, CERT members picked up all the cones and signs and returned them to the proper department. The VEM duty officer was notified that we had completed the activation. We left the site at 10:00 am.

Observations:

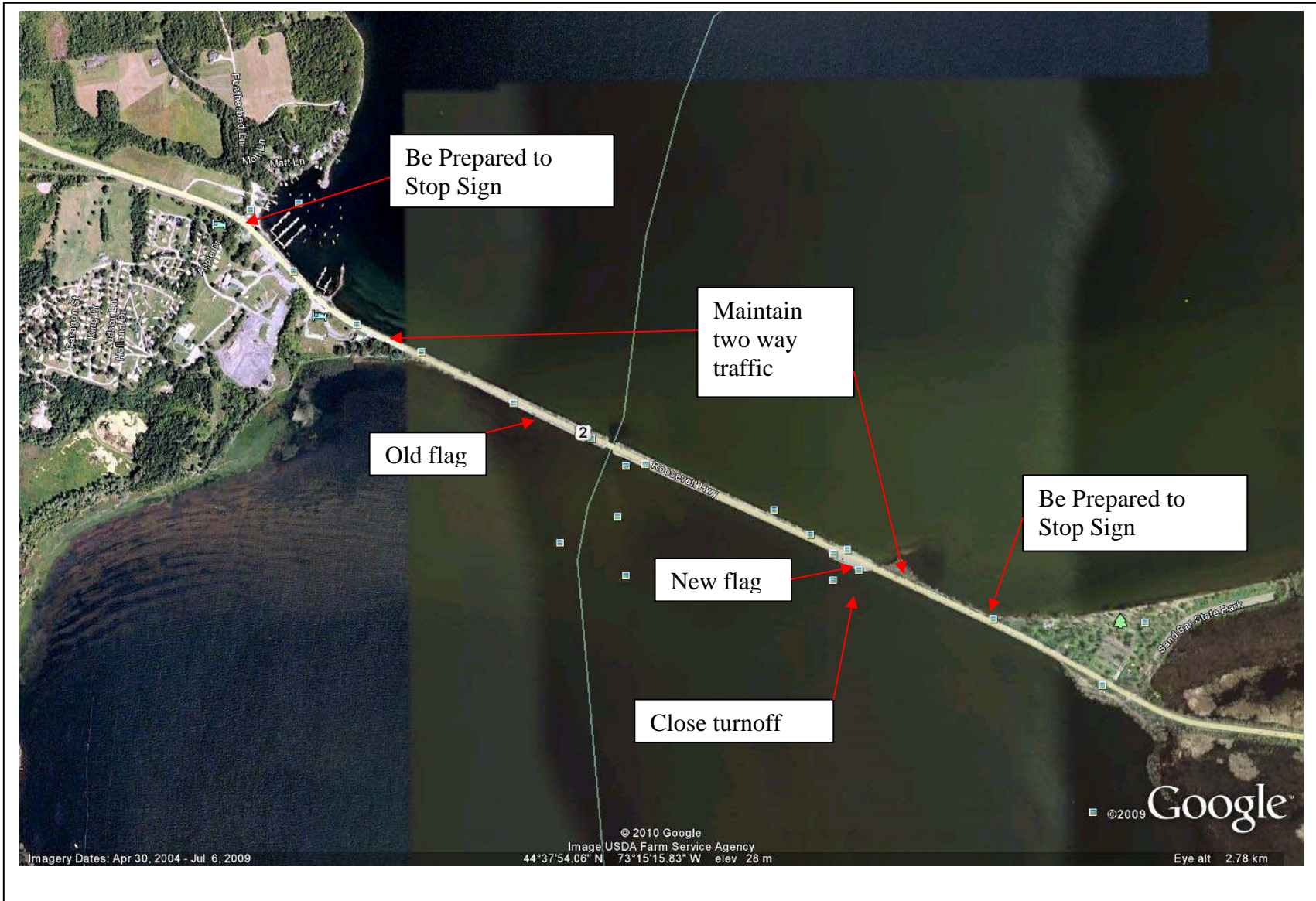
This was the second event where we borrowed cones for an activation. There is good cooperation between the Sheriff's Department, SHVFD and CERT to allow this to happen smoothly.

I can see the need for two additional folding signs (no bases needed as we have sufficient bases) that would say "SLOW". This would have made the scene safer.

We should keep some sand bags in the trailer so we can use them to keep the signs from blowing over (not a problem for this ceremony but was a problem at a previous activation). Sand can be obtained at the Town Highway Dept sheds when needed.

Submitted by
Dick Trudell
GI-CERT Director

September 12, 2010



Reply to: 18 Sunrise Lane, Grand Isle, VT 05458

(802) 372-6442